

FLORENCE RIDEOUT NEWSLETTER

MARCH 21ST, 2025

What is
new at
FRES?

This week at FRES teacher's took a moment to acknowledge students who they believed demonstrated the characteristics of assertiveness. Students were recognized in class.

Congratulations to the following students:

- Ella Merrithew
- Molly Morrow
- Raegan Trombley
- Shea Bigue
- Sadie Bent
- Eve Haynes
- Addison Raymond
- James Dewing-Baird
- Teagan Popores-LaFluer
- Anthony Leite
- Jameson McCoy
- William Morin
- Andrew Hare
- Hannah Gill

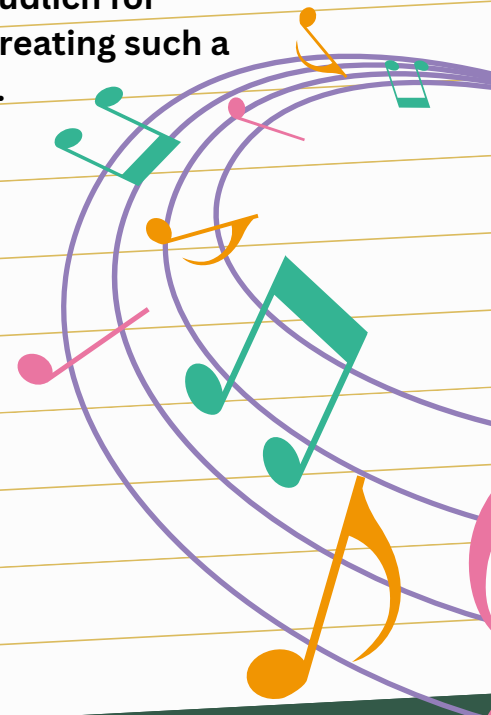


Thursday, we had our spring concert and we were delighted to see all the smiling faces. Great job kindergarteners, first, and second graders!

Thank you Ms. Kudlich for producing and creating such a wonderful show.



Leprechaun trap building



LYNDEBOROUGH CENTRAL NEWSLETTER

What is
new at
LCS?

This week at LCS, we started off the week extra lucky! The sneaky leprechaun stopped by, unfortunately we could not catch him this year! The leprechaun left the school a mess! With the warmer weather, we were able to play on the hill! Students enjoyed playing soccer, catching, and running in the field. Students did a fantastic job at the spring concert on Thursday night! The teachers loved having their own personal song! Next week, each kindergarten class will be visiting the J.A. Tarbell library for story time and borrowing books. There is no school for students on March 28th. Have a super weekend!!



SPECIAL EDUCATION SERVICES



We have a few more staff members who help with special education services: our school social worker, Christy Ruiz, our school psychologist, Erin Schneider, and our guidance counselor, Sam Metivier. Mr. Metivier works with students in counseling sessions focusing on understanding their feelings and how to cope with them. Ms. Ruiz works directly with students, focusing on improving social skills and developing tools to deal with challenging situations, as well as attending IEP meetings with parents and the rest of the special education team. Ms. Schneider also works closely with the special education case managers conducting a variety of evaluations that focus on cognitive, adaptive, social-emotional, and behavioral skills. She attends meetings as well, where she offers her expertise in the evaluation process.

The special education case managers are lucky to have these three individuals as part of the special education team!

Meghan Levesque, Gisele Dailey, Heather Roberts



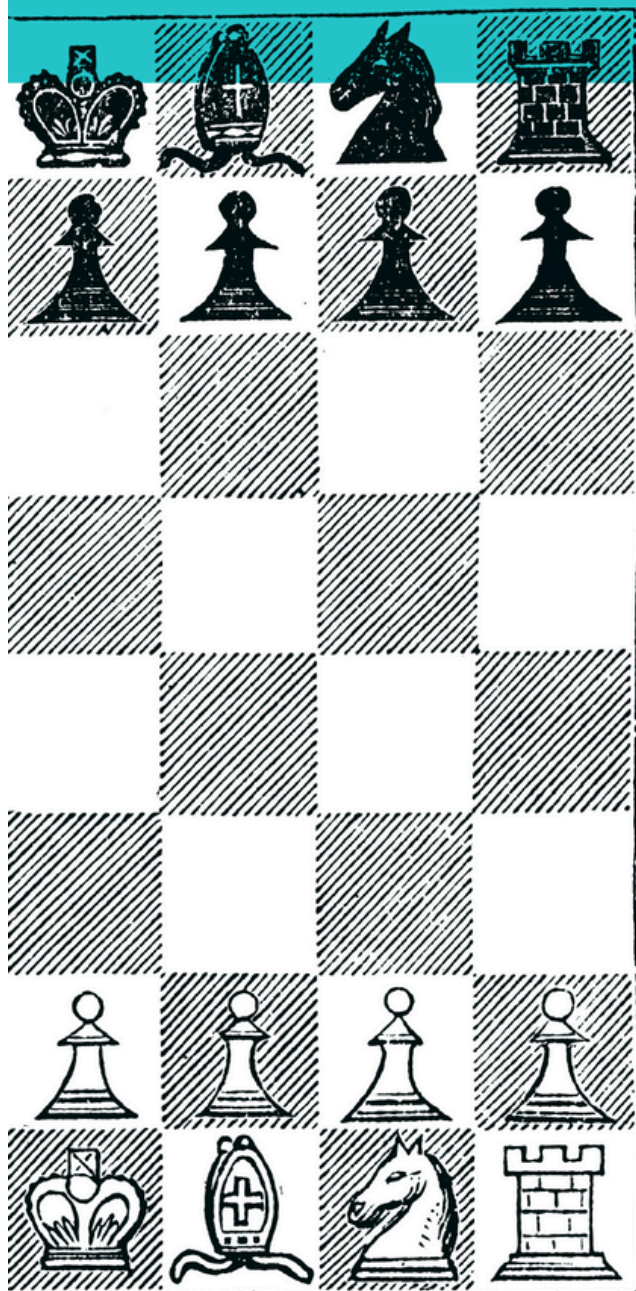
Mrs. Ruiz



Mr. M



Mrs. Schneider



3rd-5th Grade



CHESS CLUB

With

Mrs. Radloff & Ms. Loisele

MONDAY'S 3/31-4/21

2:45PM-3:30PM

IN THE FRES LIBRARY

TRANSPORTATION WILL NOT BE
PROVIDED

STUDENTS MUST BE PICKED UP AT FRES
(AND UPDATE DISMISSAL IN PICKUP
PATROL)

SPACE IS LIMITED SO SPOTS WILL BE
FIRST COME FIRST SERVED

SIGN-UPS ARE DUE BY 3/27

MAKE YOUR MOVE! JOIN THE CHESS CLUB!

IF YOU HAVE ANY QUESTIONS PLEASE REACH OUT TO

MRS. RADLOFF J.RADLOFF@SAU63.ORG OR MS. LOISELLE S.LOISELLE@SAU63.ORG

Riddle of the Week:

What has a key, but can't open a locked door?

The first 5 students who know the answer and who come to the front office will receive a small prize.

Last weeks answer to the riddle is "your name"!

HELP!!!

SAU 63 is currently looking for substitute teachers for all areas and all grades. If you would like to be a part of our team, please fill out the applications today!



Upcoming Events

- 3/24 PTO Meeting at FRES
- 3/27 Sign-ups for Chess Club
- 3/28 No School- Teacher workshop
- 4/4 Report Cards sent home
- 4/7- 4/11 Scholastic Book Fair
- 4/28-5/2 Spring Break No School





Registration for Camp Souhegan at Boys & Girls Club of Souhegan Valley is open!

The 10-week program runs from June 16 through August 22, 2025 at the Club in Milford, NH. The Camp will be closed on Friday, July 4th. Sign up by the week or by the day. Early Bird rates (\$225 a week) are available until March 31, 2025. After that, the rates are \$275 a week. The daily rate is \$65 a day. See svbgc.org for information about available financial aid or to register.

Each week of Camp Souhegan has a special theme, and a wide variety of field trips are offered, including a Fisher Cats game, Cheshire Children's Museum, Stone Zoo, Boston Museum of Science, Squam Lake, Wallis Sands State Park and more! Drop off begins at 7:00 am, structured camp programming runs from 9:00 am until 3:30 pm and pick up time is 6:00 pm. Campers have lots of nature-inspired, outdoor play opportunities, and free swim and swim lessons are available through our partnership with Keyes Pool.

Camp Souhegan is designed for youth in K-10th grades. All rising kindergarteners who wish to attend Camp Souhegan must be at least 4 years and 8 months old at their start date.

To learn more, drop by an Open House on Saturday, March 15, 2025 or Saturday, May 3rd, from 9:00 am until 12:00 pm, at 56 Mont Vernon Street, Milford, NH.

For specific questions, please reach out to Alex Craven, Program Director at acraven@svbgc.org.

Nicole

**Nicole Forsyth
Executive Director**

**56 Mont Vernon Street
Milford, NH 03055
603-672-1002 ext. 129**



WLC SPRING INTO SUMMER FEST!

Calling Artisan Vendors...



...and Local musicians!

Do you create art, self care products, or grow plants and food? Join US!

Sat. May 10th

8 AM - 2 PM

SAVE THE DATE



If it rains we will be in the town hall instead!

**Main Street Park
Wilton, NH**

Support community growth in local culture, art, and homegrown food!

CONTACT: Emily Hall
e.hall@sau63.org



Plant Sale

JOIN US MAY 10TH

8AM-2PM

EMAIL US AT
FRESLCSPTO@GMAIL.COM
OR
BRIELAVALLEE@GMAIL.COM
IF YOU WOULD LIKE TO DONATE
ANY
PLANTS OR VOLUNTEER TO HELP



SPRING
SCHOLASTIC
BOOK FAIR
APRIL 7TH-11TH

📍
**SET UP YOUR STUDENTS E-WALLET
TODAY!**

